

**SWAN LAKE FIRST NATION – MATRIX SOLUTIONS
INC. PARTNERSHIP**

INDIGENOUS CONSTRUCTION MONITORING

WEEKLY REPORT

SPREAD 9

NOVEMBER 5TH TO NOVEMBER 10TH

1. PURPOSE OF THIS REPORT

The report is a weekly summary of the daily reports submitted by the Indigenous Construction Monitors that are working on spread nine. The social and cultural findings have been tabulated with locations and mitigation measures below. A summary of the construction activities has been summarized for the weeks of November 5th to November 10th, 2018.

Social and Cultural Features

Field Observation	# of occurrences	Description and Mitigation Measures	Mitigation Status	Further Action Required (Yes/No)
Traditional Use Area (hunting, fishing, gathering, trapping)	N/A			
Rock Formations (rocks of significance, tipi rings, etc.)	N/A			
Artifacts	N/A			
Bones	N/A			
Potential Gravesites	N/A			

Environmental Features

Field Observation	# of occurrences	Description and Mitigation Measures	Mitigation Status	Further Action Required (Yes/No)
Medicinal or Cultural Plants	N/A			
Aquatic Life	N/A			
Animal Observations or Burrows	N/A			
Bird Nests	N/A			
Trees (Red Willow)	N/A			
Wetlands	N/A			
Watercourse Crossing	N/A			

Additional Observations and Summary of Activities or Concerns

Weekly activity included attending daily tailgate meetings and continue to check access points on the ROW and monitor Spread 9.

November 5, 2018 - Safety included: Slips, trips, falls: watch your footing. Wildlife: scan the ditches and practice defensive driving. Proper disposal of cigarettes butts. Vehicle: keep clean and wash it. Dry dusty road conditions. Show caution remain wary on right of way dangers or potential problems. Heavy trucks hauling water for pipe test. Be attentive when on land, watching for wildlife. Communication is important to touch base to ensure all workers are safe. Be aware of muster points at field office but out in the field with other crews. Local wildlife very active and can be aggressive in autumn. Ensure P.P.E. is worn at all time in the field.

Weather forecast/Environment: -4 degrees

Continue to keep waste out of pipeline area. Being careful as to ignitions sources. Being aware of weather conditions.

General:

Dead horse Creek SSKP 1041.03-1041.44 (HER-175) Quiet here no activities. Road #27 SSKP 1043.25 Construction/Clean-up crew tidying up both sides of road way. Journeyed on to Kick-Off. Made way to SSKP 1023.5 No work here although Straw Crimpers were there earlier. SSKP 1025 on through to SSKP 1027 signed safety tail board papers on with Straw crimping crew. Met foreman Andrew Bacon who explained their crew can continue crimping straw up until the frost leaves the ground. Crew needs to be able to penetrate minimum of 1-11/2 inches to crimp R.O.W. properly. Name of the machine used is Bail Buster to scatter straw. Depending on weather and frost this may be crews last day. Attempted to get a closer look at SSKP'S 1045 1046 1047 but all areas are congested with heavy machines and workers couldn't get in. Drove down ROW for SSKP 1057 nothing going on except the area is ready for water pressure test. SSKP 1071 quiet here. SSKP 1076.12 Signed on tail gate paper. Observed tie in welding crew install pipe.

Work Forecast: Continue monitoring spread 9.

November 6, 2018 - Safety included: Slips, trips, falls: watch your footing. Dangers today wet conditions and snow. Wild-life: scan the ditches practice defensive driving. Proper disposal of cigarettes butts. Vehicle: wash and keep vehicle clean inside and out. Show caution remain wary on right of way dangers or potential problems. Be attentive when on land watching for wildlife. Communication is important to touch base to ensure all personal are safe. Buddy system. Be aware of muster points at field office when signing on safety sheets out in the field with other crews. Driving defensively. Crossing intersections gingerly. School children may take longer to cross highways. Traffic is slower because of the snow and windy conditions.

Weather forecast/Environment: 0 degrees with a low of -7.

Remain vigilant to waste and garbage on right of way. Being careful as to ignitions sources. Be aware of weather conditions.

General:

Early morning made way to SSKP 1041.03-1041.44 Dead Horse Creek. Quiet here Road #18 quiet here as the weather was stormy. SSKP 1026 hill escarpment. ROW too wet to drive so walked in. Crew had planned to straw crimp but weather changed plans. instead crew was blocking access to area with round straw bales. SSKP 1071.49-1071.44(HER) entrance impassable. Monitored road 30a 30b construction crew here. R.O.W. too rough to try and enter. Crews here are working to finish installing pipe under Highway #3. Contingency measures will be implemented today. Rutting of top soil to the extent that admixing may occur. Excessive wheel slip. Excessive build-up of mud on tires. Formations of puddles. Tracking of mud as vehicle leaves construction site R.O.W. Made way back to do report in Morden Field Office to complete daily report.

Work Forecast: Continue to monitor Spread 9 and possibly go to Dead Horse Creek.

November 7, 2018 - Safety included: Slips, trips, falls: watch your footing. Dangers today wet conditions and ice. Wild-life: scan the ditches practice defensive driving. Proper disposal of cigarettes butts. Vehicle: keep clean and wash it. Driving safely is paramount. Wet road conditions. Show caution remain wary on right of way dangers or potential problems. Be attentive when on land watching for wildlife. Communication is important to touch base to ensure all personal are safe. Buddy system. Be aware of muster points at field office and when signing in at on R.O.W. in the field with other crews. Be R.O.W. ready with updated and inspected safety equipment

Weather forecast/Environment: Cloud cover with a low of -8 degrees.

Remaining vigilant to waste and garbage on right of way. Being careful as to ignitions sources. Being aware of weather conditions.

General:

Road #24- #30b Final clean up. Road #30a Winch operating under Hwy #3 Also bore support team Hammering, Winching, welding crew here on site. allot of congestion in area. Road #35-36 Monitoring spread. Crews are dismantling bridge and preparing to dismantle road approaches. Preparing topsoil replacement. SSKP 1076.120-MB-WC77 Here crews are in process of restoring. Ensure water from flumes, pumps, do not cause erosion or introduce sediment into channel. If warranted, place rock rip-rap tarps, plywood sheeting to control erosion at the outlet of pumps to control erosion. SSKP 1071 crew installing tie ins east transition of Rosenheim drain. Dead Horse Creek monitored and observed clean-up crew working field with Bobcat and crew walking R.O.W. Hill Escarpment SSKP 1026-27 quiet. Made way to Morden field office to compile report

Work Forecast: Continue to monitor Spread 9.

November 8, 2018 - Safety included: Slips, trips, falls: watch your footing. Dangers today wet conditions and ice. Wild-life: scan the ditches practice defensive driving. Proper disposal of cigarettes butts. Vehicle: keep clean and wash it. Driving safely is paramount. Wet road conditions. Show caution remain wary on right of way dangers or

potential problems. Be attentive when on land watching for wildlife. Communication is important to touch base to ensure all personal are safe. Buddy system. Be aware of muster points at field office and when signing in at on R.O.W. in the field with other crews. Be R.O.W. ready with updated and inspected safety equipment

Weather forecast/Environment: Cloud cover with a high of -8degrees.

Remaining vigilant to waste and garbage on right of way. Being careful as to ignitions sources. Being aware of weather conditions.

General:

Today was given direction by our senior monitor to travelled to Dead Horse Creek nothing happening there. Travelled to Grass Dancers as they were doing tie-ins and it was very congested. We had left to 1057+0150 as we monitored the clean-up of the

bridge they had finished taken all the clay off yesterday and this morning the began to take the rest of it out. As we monitored them take the silk fencing down and the rest of the wooden tie's out and pile them. They and used excavators and a dozer to pull the main beams out. Then using the excavators on each side of the drain as they began to pull up the geo-tec up and pile it as well they had a man on the site cleaning up the small materials as in wooden stakes, shrubs, metal stakes and sum soil. The area was cleaned up very well and was in good shape as we finished there for the day.

Road #24- #30b Final clean up

Road #30a Winch operating under Hwy #3, also bore support team Hammering, Winching, welding crew here on site. A lot of congestion in area. Road #35-36 Monitoring spread. Here crews are dismantling bridge and preparing to dismantle road approaches. Preparing topsoil replacement. SSKP 1085.25 Here crews are in process water test. Here there was about 35-40 tanker trucks in a line at Road 53-54. Also, it was closed down to traffic. SSKP 1071 crew installing tie ins east transition of Rosenheim drain. Walked whole mile on KP. Dead Horse Creek monitored area quiet here on R.O.W. Hill Escarpment SSKP 1026-27 quiet. Made way to Morden field office to compile daily report

Work Forecast: Continue monitoring Spread 9.

November 9, 2018 - Safety included: Slips, trips, falls: watch your footing. Dangers today wet conditions and ice. Wild-life: scan the ditches practice defensive driving. Proper disposal of cigarettes butts. Vehicle: keep clean and wash it. Dry dusty road conditions. Show caution remain wary on right of way dangers or potential problems. allot of heavy trucks hauling water for pipe test. Be attentive when on land, watching for wildlife. Communication is important to touch base to ensure all workers are safe.

Be aware of muster points at field office but out in the field with other crews.

Ensure P.P.E. is worn at all time in the field.

Weather forecast/Environment: Patches of clouds, -8 degrees.

Continue to keep waste out of pipeline area. Being careful as to ignitions sources.

Be aware of weather conditions.

General:

SSKP 1085.700 area is extremely congested today as tie in crews are working to finish welds and prepare to bury pipe. Spoke to Ken Woods the inspector and he provided an update on how much they had left to do there. He had said it was just about done. Further on down the R.O.W. Hydro test crew is filling pipe with water in order to test welds. Didn't seem to be as many trucks today as there was yesterday. SSKP 1071 once again here tie in crew are doing tie ins. MB-WC-80. SSKP 1041.3-1041.44(HER)-175 Today while monitoring never seen any activities. Headed back to the Morden yard to complete daily report.

Work Forecast: Continue to monitor Spread 9.

November 10, 2018 - Safety included: Slips, trips, falls: watch your footing. Dangers today wet conditions and ice. Wild-life: scan the ditches practice defensive driving. Proper disposal of cigarette butts. Vehicle: keep clean and wash it. Dry dusty road conditions. Show caution, remain wary on right of way for dangers or potential problems. A lot of heavy trucks hauling water for pipe test. Be attentive when on land, watching for wildlife. Communication is important to touch base to ensure all personal are safe. Being aware of muster points at field office but out in the field with other crews. Ensure P.P.E. is worn at all time in the field.

Weather forecast/Environment: -9.5 degrees C

Continue to keep waste out of pipeline area. Being careful as to ignitions sources.

Being aware of weather conditions.

General:

Today was given direction by our senior monitor to travelled sskp1071.49-1071.71(her-176) Grass Dancers and monitor the crew that was welding and doing lowering of the pipe. They cleaned out the trench where they welded and lowered the pipe into the ground and began to cover it with clay. They had two excavators doing the covering of the pipe. Monitored the process for the morning and part of the afternoon. Moved on to sskp 1037.769-1038.734 and monitored the spreading of the final top soil with an excavator. SSKP 1093.13MB-WC80 installing tie ins.

SSKP 1085.700 area is extremely congested today as tie in crews are working to finish welds and support crew for water control.

SSKP 1071 once again here tie in crew are doing tie ins. MB-WC-80.

SSKP 1057 lone excavator removing access to R.O.W. mats

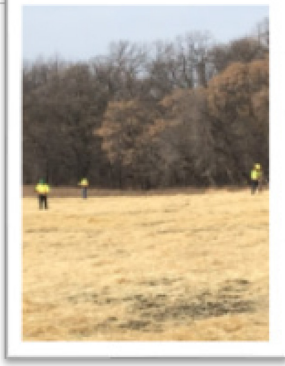
SSKP 1037.852 Returned to Morden field office to complete daily reports

Work Forecast: Continue monitoring Spread 9.

Photos of Sites Visited & Topics Discussed This Week

November 5, 2018

Photo



Description & Location:

SSKP 1026+100
PICTURE TAKEN FACING
NORTH

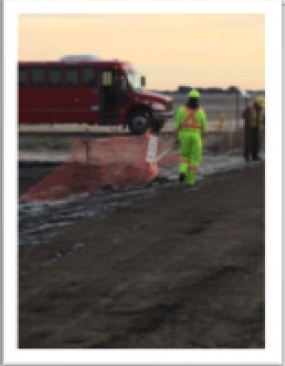
Photo



Description & Location:

SSKP 1026+200 PICTURE WAS THAKEN
FACING NORTH EAST

Photo



Description & Location:

1043+250 PICKTURE WAS
TAKEN FACING EAST OFF THE ROAD

Photo

Description & Location:

Photo



Description & Location:

KP 1026 Crimping crew Bail buster looking north

Photo



Description & Location:

RD 27 looking east

Photo



Description & Location:

Rd 12 looking east

Photo

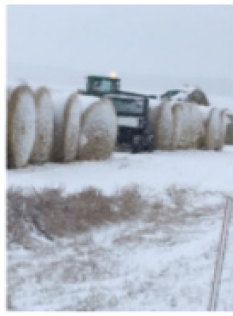


Description & Location:

tie in crew welding SSKP 1076

November 6, 2018

Photo



Description & Location:

SSKP 1026+975 AS THE BLOCKED
OFF ROW PICTURE WAS TAKEN
FROM ROAD NORTH WEST

Photo



Description & Location:

SSKP1071.49 ROAD WAS TO SNOWY AND
WET AND MUDDY PICTURE TAKEN FACING
SOUTH

Photo



Description & Location:

photo road 18 looking east

Photo



Description & Location:

hill escarpment SSKP 1026 looking west

Photo



Description & Location:

photo of SSKP 1071.49-1071.71 looking
south

Photo



Description & Location:

Photo road 30a 30b

November 7, 2018

Photo



Description & Location:

SSKP1042+600 PICTURE WAS
TAKEN FACING WEST

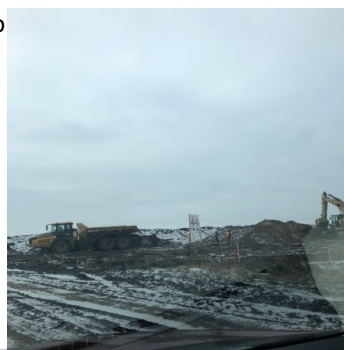
Photo



Description & Location:

SSKP 1042+750 PICTURE WAS TAKEN
OF PARTNER HEADING EAST

Photo



Description & Location:

Road 44 facing south

Photo



Description & Location:

Road#30 looking north

Photo



Description & Location:

Road #35-36 looking south

Photo



Description & Location:

SSKP 1076 looking west

November 8, 2018

Photo



Description & Location:

SSKP1057+0150 PICTURE WAS THAKEN
FACING NORTH WEST

Photo



Description & Location:

SSKP 1057+0150 PICTURE WAS TAKEN
FACING NORTH WEST

November 9, 2018

Photo



Description & Location:

SSKP1070+715
PICTURE WAS TAKEN FACING
EAST

Photo



Description & Location:

SF-53(1085+)
PICTURE WAS TAKEN FACING EAST

Photo



Description & Location:

Road #44 facing south

Photo



Description & Location:

Water trucks at Roar #54

Photo



Description & Location:

Water pressure testing at #54

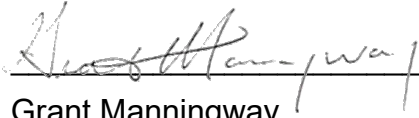
Photo



Description & Location:

tie in crew welding DDKP 1085 facing
west

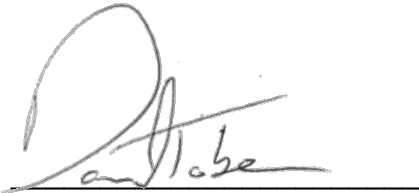
APPROVALS



Grant Manningway
Construction Monitor

December 18, 2018

Date



Daniel Tober
Senior Environmental Scientist

December 18, 2018

Date